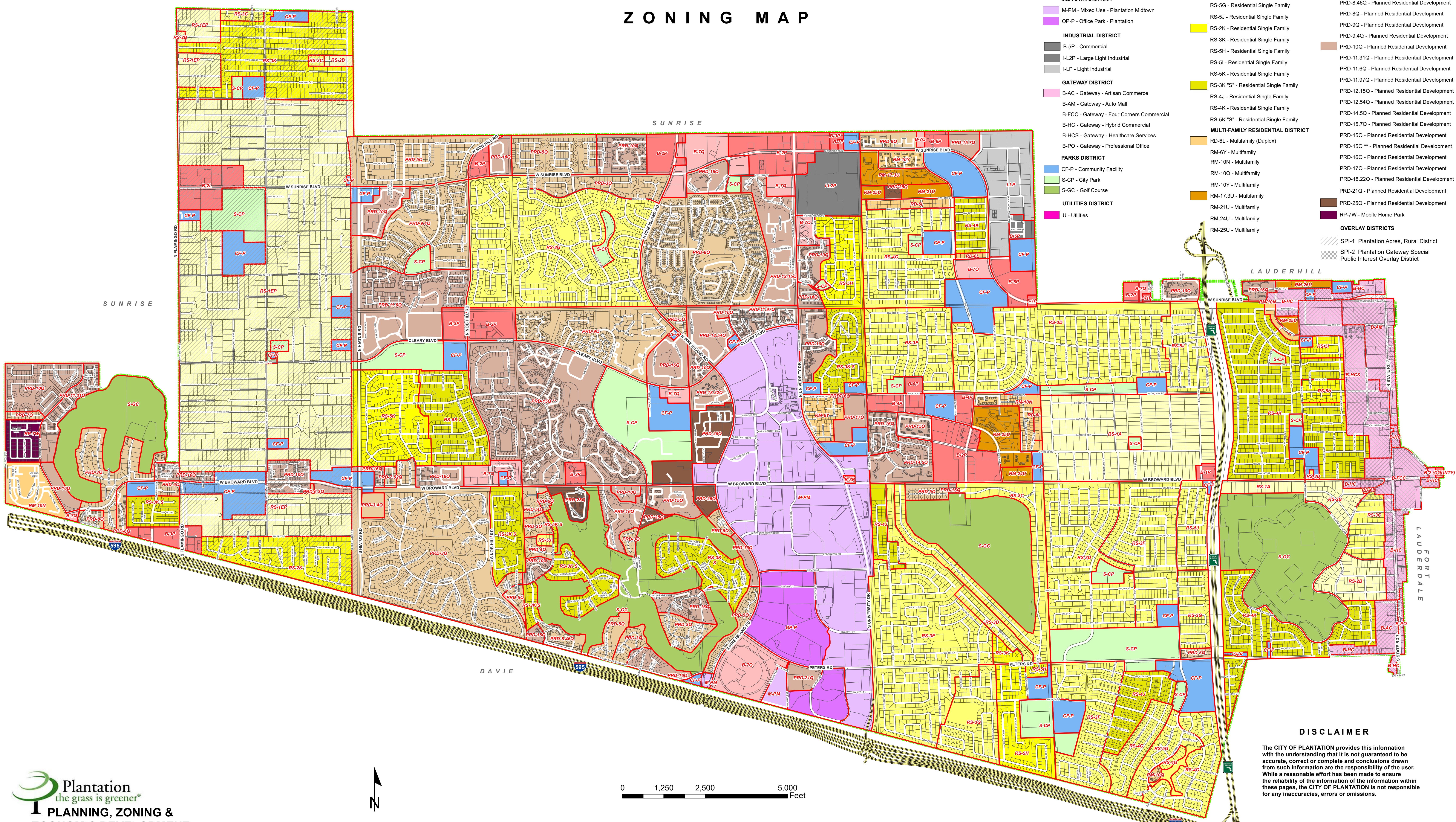
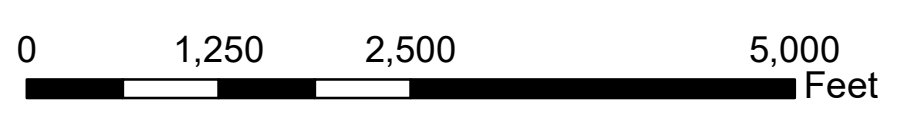


# CITY OF PLANTATION ZONING MAP



LEGEND	
<b>BUSINESS DISTRICT</b>	<b>SINGLE-FAMILY RESIDENTIAL DISTRICT</b>
B-1P - Neighborhood Business	RS-1EP - Residential Single Family
B-2 (COUNTY) - General Commercial Business	RS-1A - Residential Single Family
B-2L - Limited Commercial Business	RS-2B - Residential Single Family
B-2P - Central Business	RS-3C - Residential Single Family
B-3P - General Business	RS-3D - Residential Single Family
B-4P - Restricted Business	RS-3F - Residential Single Family
B-6P - Institutional - Educational	RS-3G - Residential Single Family
B-7Q - Planned Commercial Development	RS-4G - Residential Single Family
<b>MIDTOWN DISTRICT</b>	RS-5G - Residential Single Family
M-PM - Mixed Use - Plantation Midtown	RS-5J - Residential Single Family
OP-P - Office Park - Plantation	RS-2K - Residential Single Family
<b>INDUSTRIAL DISTRICT</b>	RS-3K - Residential Single Family
B-5P - Commercial	RS-5H - Residential Single Family
L-2P - Large Light Industrial	RS-5I - Residential Single Family
L-1P - Light Industrial	RS-5K - Residential Single Family
<b>GATEWAY DISTRICT</b>	RS-3K "S" - Residential Single Family
B-AC - Gateway - Artisan Commerce	RS-4J - Residential Single Family
B-AM - Gateway - Auto Mall	RS-4K - Residential Single Family
B-FCC - Gateway - Four Corners Commercial	RS-5K "S" - Residential Single Family
B-HC - Gateway - Hybrid Commercial	<b>MULTI-FAMILY RESIDENTIAL DISTRICT</b>
B-HCS - Gateway - Healthcare Services	RD-6L - Multifamily (Duplex)
B-PO - Gateway - Professional Office	RM-6Y - Multifamily
<b>PARKS DISTRICT</b>	RM-10N - Multifamily
CF-P - Community Facility	RM-10Q - Multifamily
S-CP - City Park	RM-10Y - Multifamily
S-GC - Golf Course	RM-17.3U - Multifamily
<b>UTILITIES DISTRICT</b>	RM-21U - Multifamily
U - Utilities	RM-24U - Multifamily
	RM-25U - Multifamily
	<b>OVERLAY DISTRICTS</b>
	SPI-1 Plantation Acres, Rural District
	SPI-2 Plantation Gateway Special Public Interest Overlay District
	<b>PLANNED RESIDENTIAL DEVELOPMENT</b>
	PRD-3Q - Planned Residential Development
	PRD-3.4Q - Planned Residential Development
	PRD-4Q - Planned Residential Development
	PRD-5Q - Planned Residential Development
	PRD-6.3Q - Planned Residential Development
	PRD-6Q - Planned Residential Development
	PRD-7.62Q - Planned Residential Development
	PRD-7Q - Planned Residential Development
	PRD-8.46Q - Planned Residential Development
	PRD-8Q - Planned Residential Development
	PRD-9Q - Planned Residential Development
	PRD-9.4Q - Planned Residential Development
	PRD-10Q - Planned Residential Development
	PRD-11.31Q - Planned Residential Development
	PRD-11.6Q - Planned Residential Development
	PRD-11.97Q - Planned Residential Development
	PRD-12.15Q - Planned Residential Development
	PRD-12.54Q - Planned Residential Development
	PRD-14.5Q - Planned Residential Development
	PRD-15.7Q - Planned Residential Development
	PRD-15Q - Planned Residential Development
	PRD-15Q ** - Planned Residential Development
	PRD-16Q - Planned Residential Development
	PRD-17Q - Planned Residential Development
	PRD-18.22Q - Planned Residential Development
	PRD-21Q - Planned Residential Development
	PRD-25Q - Planned Residential Development
	RP-7W - Mobile Home Park



OFFICIAL ZONING MAP IS LOCATED IN THE CITY CLERK'S OFFICE

**DISCLAIMER**  
 The CITY OF PLANTATION provides this information with the understanding that it is not guaranteed to be accurate, correct or complete and conclusions drawn from such information are the responsibility of the user. While a reasonable effort has been made to ensure the reliability of the information within these pages, the CITY OF PLANTATION is not responsible for any inaccuracies, errors or omissions.