

# PLANTATION GATEWAY DEVELOPMENT DISTRICT

## LOCATION

Plantation Gateway is located at the heart of Broward County and is situated at the eastern entrance to the City of Plantation along State Road 7 from Sunrise to Davie Boulevards.

## TRANSPORTATION AND ACCESS

- 10 Bus Shelters serving BCT Routes 18 and Route 22, the *Breeze* bus service which has the highest ridership in Broward County
- 1 mile to I-595 and Florida's Turnpike
- 2 miles to I-95, Tri Rail and Amtrak

## INFRASTRUCTURE AND UTILITIES

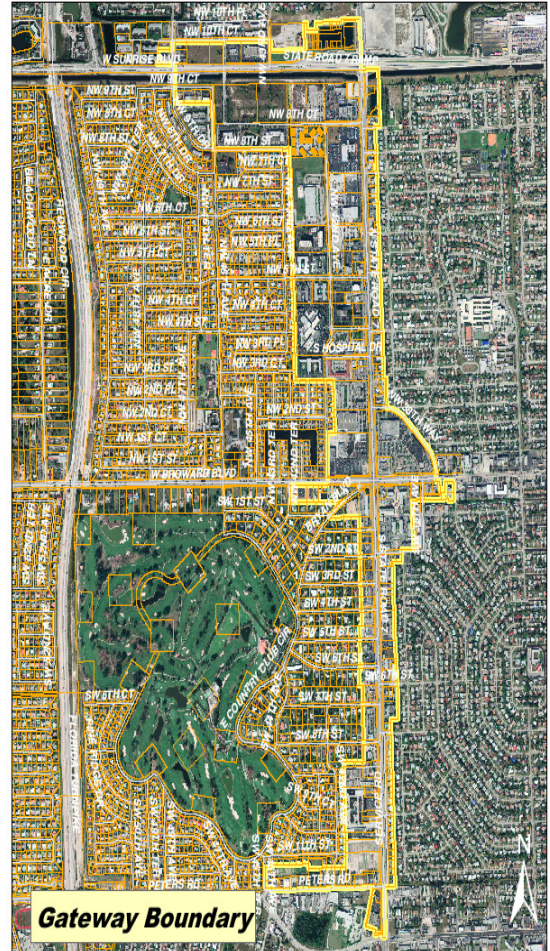
- ATT Fiber Optic Network
- Peoples Gas available on east side of SR 7
- Newly installed Sanitary Sewer System
- Utility Lines Placed Underground

## TRAFFIC COUNTS (Average Daily Trips)

Broward Boulevard	41,000
Sunrise Boulevard	55,500
North State Road 7	46,500
South State Road 7	45,000

## DEMOGRAPHICS (Within 1-Mile Radius)

	Plantation Gateway	City of Plantation
Population	15,335	85,688
Households	4,512	33,671
Avg. HH size	3.37	2.51
Median Age	33.4	39.6
Housing Units	4,512	34,999
% Owner Occupied	75%	72%
Median Income	\$48,092	\$65,794



Community Redevelopment Office  
 307 S. State Road 7  
 Plantation, FL 33317  
 Phone: 954-585-2330  
 Email: [cgonzalez@plantation.org](mailto:cgonzalez@plantation.org)

